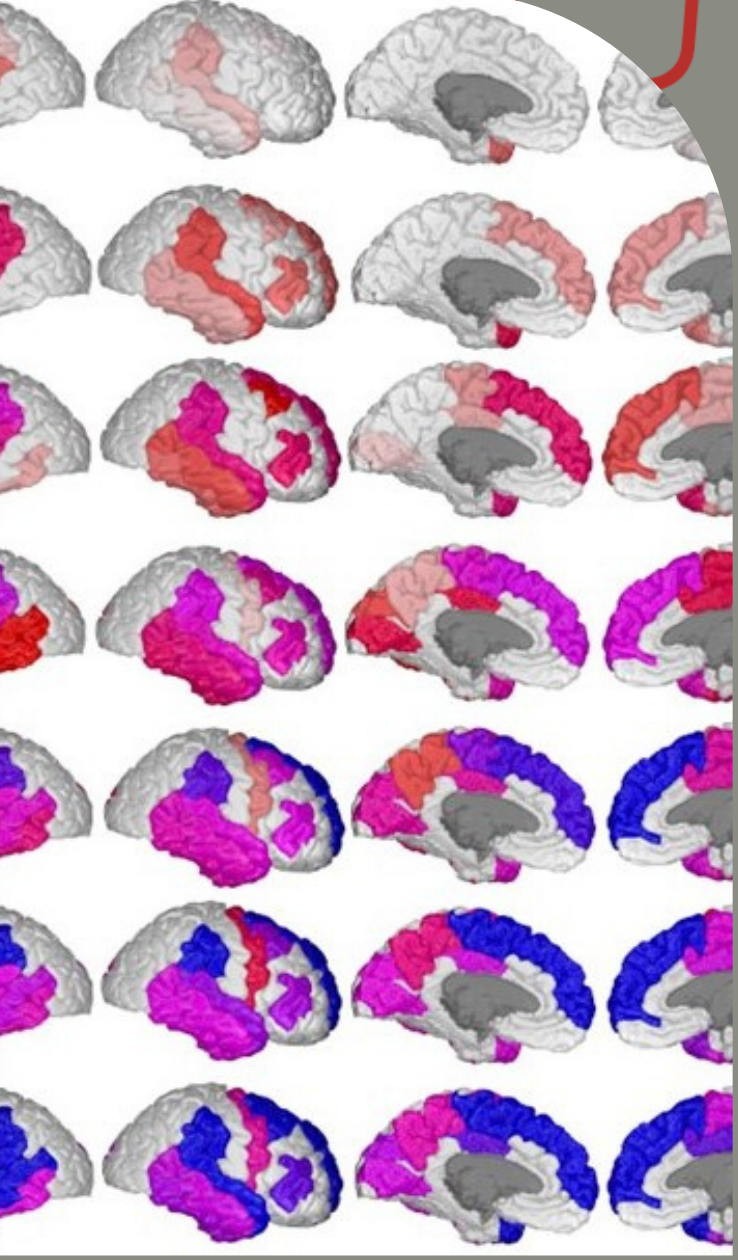


ILAE
BRITISH BRANCH



EPILEPSY NEUROIMAGING COURSE

HYBRID



29 - 31 October 2022

**Chalfont Centre for
Epilepsy, UK**



AIM: to provide both an overview and a solid foundation in state-of-the-art MRI and PET scanning in epilepsy



Onsite places limited to 24 people

**JOIN US
NOW!**

**EARLY BIRD RATES UNTIL
31ST AUGUST 2022**

www.ilaebritish.org.uk/events/4th-ilae-british-branch-epilepsy-neuroimaging-course

